

Orientation for the Nix Senior Health Care Center

**Welcome to the Division of
Community Geriatrics**



Overview

- We have 5 clinical geriatricians, Drs. Espino, Parker, Finley, Ye, and Oakes.
- We also have three nurse practitioners, Ms. Stephens-Kelly, Carr and Mr. Efeovbokhan.
- There is 1 nurse, 1 social worker, 2 medical assistants, 1 records clerk, and 1 receptionist.
- Cindy Alford, PhD, is our educational specialist.
- We encourage you to introduce yourself to all co-workers. Feel free to ask questions.

Geriatrics Faculty



Robert Parker, MD



David Espino, MD



YanPing Ye, MD



Rosina Finley, MD



Liliana Oakes, MD.

Parking

- Park across the street at Mid City Garage
- Have your ticket validated at the **VALET** parking booth on the ground floor of the Nix by the service elevator before you leave for the day
- Do NOT park in the Valet Parking



Assessment Tools

<http://geriatrics.uthscsa.edu>

- Review Tutorials and Be Familiar With The Instruments
 - Mini Mental Status Exam
 - Activities of Daily Living
 - Instrumental Activities of Daily Living
 - Tinetti Gait and Balance Scale
 - Geriatric Depression Scale (GDS)
 - CLOX evaluation

The screenshot shows the website for the John A. Hartford Center of Excellence in Geriatrics Education at UT Health Science Center San Antonio. The page is titled "Geriatric Resources" and features a navigation menu on the left with options like Home, Fellowship, Research, Clinical Services, Trainees, and Faculty. The main content area is divided into sections: "Assessment Instruments" (listing ADLs/IADLs in English and Spanish, CLOX, Geriatric Depression Scale, FAST Scale, Mini-COG, Mini-Mental State Examination, and Pain Management Guide Card), "Guidelines" (listing CHART: Parenteral Drugs for Treatment of Hypertensive Emergencies), and "Geriatric Recommended Readings".

Assessment tools are located under Instruments at <http://geriatrics.uthscsa.edu>.

The screenshot shows the website for the Center of Excellence in Geriatrics Education at UT Health Science Center San Antonio. The page features a navigation menu on the left with options like Home, Fellowship, Research, Clinical Services, Trainees, and Faculty. The main content area includes a header with the center's name and logo, a search bar, and a section for John A. Hartford. A sidebar on the right contains a 'Resources' section with links to 'Advance Directives', 'Assessment Instruments', 'Geri Reading Topics', 'Key Phone Numbers', 'Nix Dictation Info', and 'Maps'. A red arrow points to the 'Assessment Instruments' link. Below the Resources section is a 'Find People' search box.

University: Home | Calendar | Maps
WE MAKE LIVES BETTER™
Site University Enter Keywords Search

SCHOOL OF MEDICINE
UT HEALTH SCIENCE CENTER™
SAN ANTONIO

UT MEDICINE SAN ANTONIO
UT HEALTH SCIENCE CENTER™
WE MAKE LIVES BETTER
Find a Family Physician

Home
Fellowship
Research
Clinical Services
Trainees
Faculty

John A. Hartford
Center of Excellence in Geriatrics Education

"Dedicated to the education of physicians, fellows, residents, & medical students... producing the next generation of geriatric academicians."

Welcome!

The Center of Excellence in Geriatrics Education is funded by the John A. Hartford Foundation, a private philanthropic organization devoted to improving health care for older adults. The mission of our center is to prepare physicians to be leaders in the field of geriatric education. We support fellows for two years of training beyond residency, preparing them to be expert clinicians, as well as giving them the foundation to be successful as medical school faculty. Fellows work in a variety of clinical settings while also learning to conduct research, write articles and proposals, and teach.

In addition to educating fellows, the Center of Excellence faculty train medical students and residents from a wide range of specialties. For more information about geriatrics and training for geriatricians, visit the American Geriatric Society's FAQ page: www.americangeriatrics.org/news/geria_faqs.shtml.

Resources

- [Advance Directives](#)
- [Assessment Instruments](#)
- [Geri Reading Topics](#)
- [Key Phone Numbers](#)
- [Nix Dictation Info](#)
- [Maps](#)

Find People

Enter first or last name.

Search

Faculty/Staff Student

Geriatric Patients

- The nurse will put the patient's name on the white board after vitals are taken.
- Place your initials by the patient's name in order.
- Begin to see patient as soon as they are on the board.



Value the patient's time

- See your patient promptly.
- Complete all prescriptions, referrals, and orders promptly to allow your patient to leave.
- ***Lastly do your progress note!!!***



Seeing your Geriatric Patient

- Review the patient's chart to be found in the door slot.
- Take your patient's history and do a physical exam.
- If you need a translator, ask the staff for help.
- If you need to do a genital or breast exam, wait until this can be done with your attending.



Geriatric Patients cont'

- Present your patient to your attending, including your assessment and plan.
- See your patient with your attending.
- Next complete the following
 - Write any prescriptions
 - Complete any consult or x-ray request
 - Complete the order sheet including any lab work and indicate the return appointment.
- Tell the nurse your patient can be checked out.
- THEN you may complete your note.

If you are waiting for the attending.....

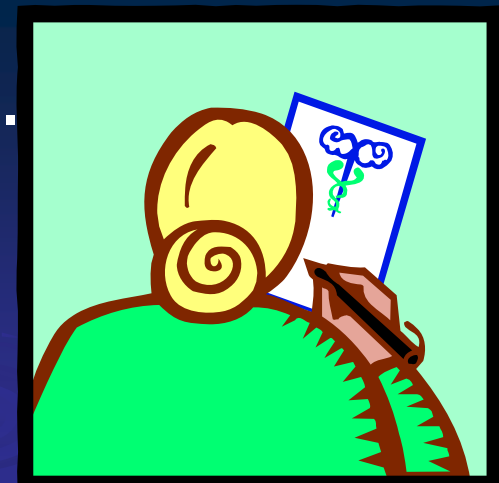
- Start your note.
- Write the prescriptions for your patient.
- Fill out referral forms.
- Look up patient's previous labs and x-rays.
- Update the patients medication list in the EMR.

(for information on the EMR, see our tutorial on the Hartford website)



Write Scripts

- Write prescriptions for patients.
- If you are unfamiliar with a particular medication, look it up before writing the prescription
- Chronic medications - give **90** day supply with **3** refills.
- Have your attending sign them.



Notes & Problem Lists

- You may write out your notes on the note sheet entitled UT Medicine Family Health Center Progress Note provided with the patients chart.
- It is a draft to be thrown away so write whatever details of the encounter you wish to remember.

Conclusion

- We hope your learning experience in our clinic is valuable.
- Please feel free to give us feedback on what we could improve.
- Feel free to ask questions.

